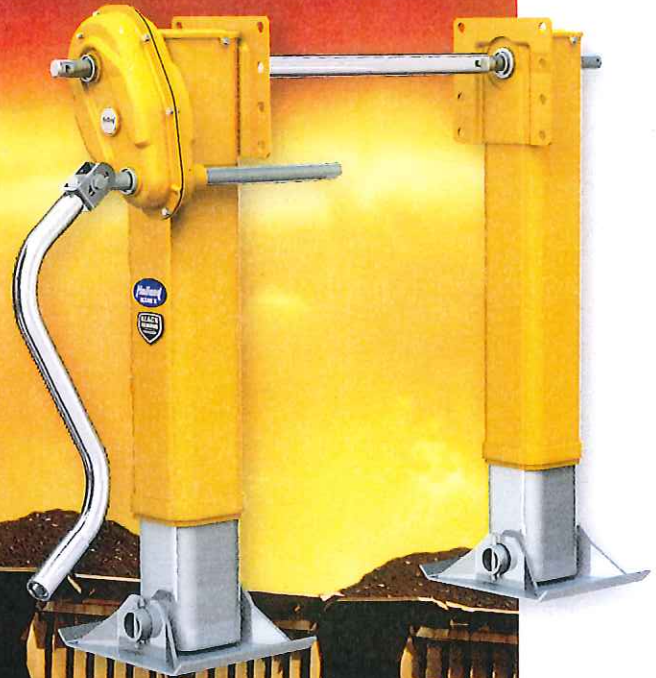




SAF-HOLLAND Group

# HOLLAND MARK V™

## LANDING GEAR



With the Ultimate  
In Corrosion Protection

THE LANDING GEAR THAT EXCEEDS THE STANDARDS  
FOR STRENGTH, DURABILITY, AND EASE OF LIFT.



Engineering Your Road to Success

# HOLLAND MARK V™ LANDING

## SPECIFY IT, RELY ON IT.

This legendary landing gear will deliver the strength, the ease of operation and the durability needed to meet the demands of your landing gear application.

## RUGGED, HIGH-STRENGTH, LOW-ALLOY STEEL TUBING.

- Exceeds all AAR M-931 and all TTMA RP-4 performance specifications
- 80,000 psi minimum yield upper tube and inner tube maximizes strength while reducing weight
- Superior side-load capacity of 32,000 lbs.

## GETS TO THE GROUND IN A HURRY. EASY TO OPERATE.

- 2.5 turns per inch of travel makes it one of the fastest to the ground and back up
- Robust lift capacity of 62,500 lbs. with 100 ft. lbs. of input torque
- Specially designed to shift easily even in cold weather

## INDUSTRY-STANDARD TTMA MOUNTING PLATE

## GEARBOX

with low-temperature premium lube rated for service from -65°F to 225°F.

## DOUBLE-D CRANK HANDLE CONNECTION

means more stabilized cranking and stronger crank connection.

## TOUGH, 5", ROUNDED-CORNER, SQUARE UPPER LEG TUBING

provides 200,000 lbs. of static vertical load\*, 32,000 lbs. of side-load capacity.

\* Rating is with solid axle

## FOOT OPTIONS

Variety of foot options and other accessories available.



Standard 5-Year Performance Guarantee and Optional 10-Year Performance Guarantee available.

(See warranty for details)



# G GEAR



SAF-HOLLAND Group



**SELF-LUBRICATING**  
powdered metal shaft bushings for increased service life.

**A DURABLE PERFORMER,**  
with three large, in-line, heat-treated ductile iron spur gears.

**HEAVY-DUTY THRUST BEARINGS**  
for smooth elevating screw and bevel gear operation. Heavy-Duty Mark V™ model utilizes tapered roller bearings.

**DOUBLE LEAD ELEVATING SCREW**  
is 1-5/8" diameter, rolled threads for added strength and smooth lift.

**DEEP GREASE RESERVOIR**  
in the riser nut means constant lubrication of the elevating screw.

## HEAVY-DUTY MARK V™

A ROBUST 46,000 LBS.  
SIDE LOAD CAPACITY  
TO MEET  
HEAVY-DUTY  
APPLICATION  
REQUIREMENTS

LARGE  
HEAVY-DUTY  
TAPERED  
MOUNTING PLATE

LARGER 2"  
REINFORCEMENT  
COLLAR AROUND  
UPPER LEG TUBING  
WITH HEAVY-DUTY  
ONE PIECE INNER  
TUBE FOR INCREASED  
STRENGTH

HEAVY-DUTY  
16" x 10" SAND SHOE



The Heavy-Duty Mark V is designed for rugged on- and off-highway applications: dumps, tankers, packers, transfer trailers, and intermodal applications.

## SPECIFICATIONS

### CAPACITIES

200,000 lbs Load Capacity  
32,000 lbs. Side Load Capacity  
62,500 lbs. Lift Capacity  
(100 ft. lbs. Input Torque)

### GEARING

2.5 Turns Per Inch  
High Gear  
33.8 Turns Per Inch  
Low Gear



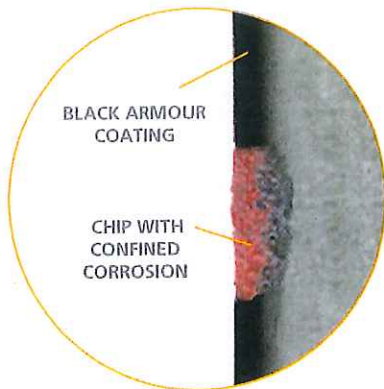
# ADVANCED CORROSION PROTECTION IS STANDARD



The Black Armour™ metal protection process, unlike a primer, paint or powder coating, grafts to the metal to form a protective skin that is impervious to water and anti-icing chemicals. Black Armour™ is top coat compatible without pre-sanding. Black Armour™ will not shrink and remains flexible to resist gravel impingement. If scraped, Black Armour™ prevents the spread of rust creep.

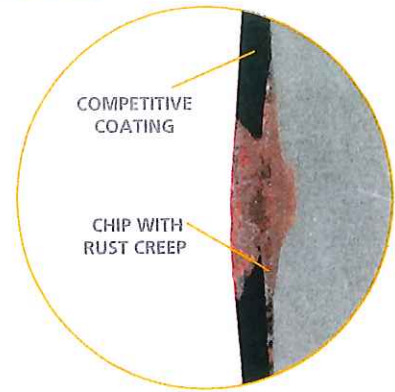
## BLACK ARMOUR™

Black Armour™ grafts to the metal to form a protective skin that when chipped or scraped will confine any corrosion and prevent it from spreading.



## COMPETITIVE STANDARD

Standard competitive coatings simply cover the metal, allowing the metal structure to remain vulnerable to the spread of corrosion when chipped or scraped.



## OPTIONAL NoLube™

The NoLube™, low maintenance technology provides a sealed system resulting in maximum component lubrication with no need for additional grease. Optional NoLube® technology further protects your investment and lowers maintenance time and costs through the application of high-quality seals and an encased elevating screw to seal in lubricants and provide consistent performance and easy operation for years to come.

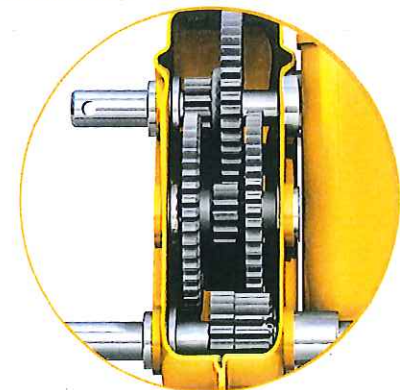
## SEALED GREASE TUBE

Completely surrounding the elevating screw is a sealed grease tube so that when the legs are raised or lowered, the screw receives a new coating of grease.



## SHAFT SEALS (STANDARD)

All driveshaft and crankshaft bushings include shaft seals to prevent water, dirt and other contaminants from entering the gearbox and upper leg.



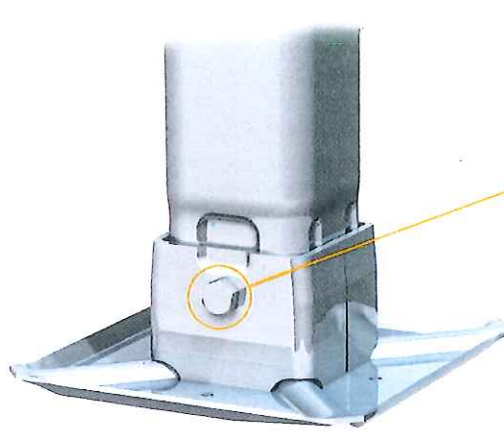
# OPTIONAL RCF

## REMOVABLE CUSHION FOOT

SAF-HOLLAND offers an optional, patented removable cushion foot (RCF) for the Mark V™ Landing Gear Series. A proven, innovative landing gear foot that has won the respect and recognition of our industry.

The RCF footwear option utilizes a heavy duty rubber cushion that absorbs 50% more shock than conventional footwear.

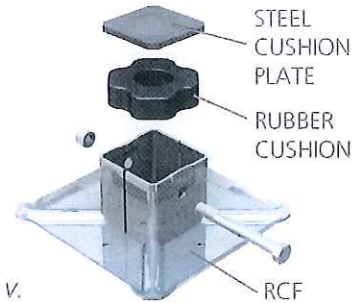
Mark V™ landing gear equipped with RCF footwear meets all AAR and TTMA performance specifications. And even provides a 3 lbs. per landing gear set weight savings over the previous cushion foot design.



The RCF feature allows easy removal of a damaged foot by simply extracting a single bolt. No cutting or welding is required.

RCF technology simply transmits the shock from the entire load in compression from steel-to-rubber-to-steel. That means reduced wear and damage to the cargo, trailer, and landing gear.

*RCF is not available for the Heavy-Duty Mark V.*



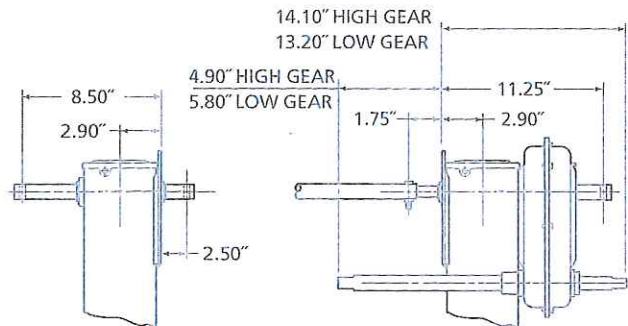
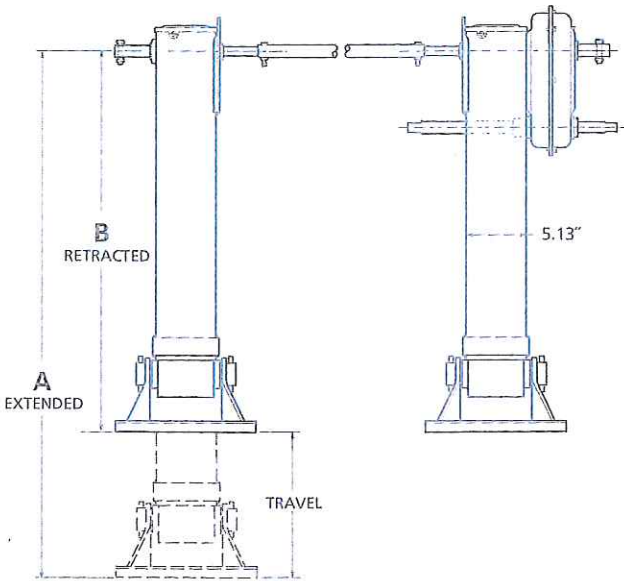
## LANDING GEAR ACCESSORIES & FOOTWEAR OPTIONS



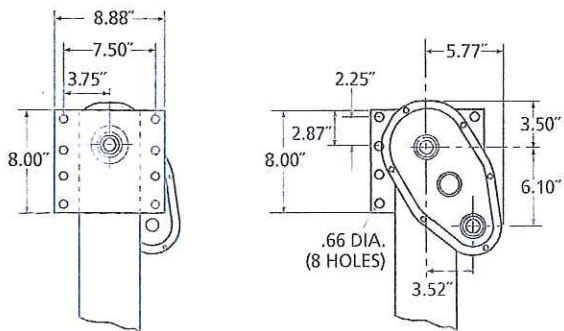
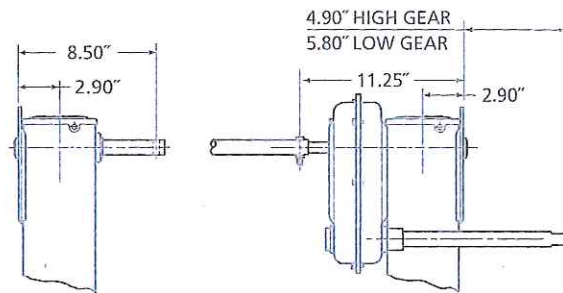
All landing gear accessories and footwear options can be found in the Aftermarket Landing Gear Optional Parts and Accessories Guide (XL-AM10013PM).

# SPECIFICATIONS

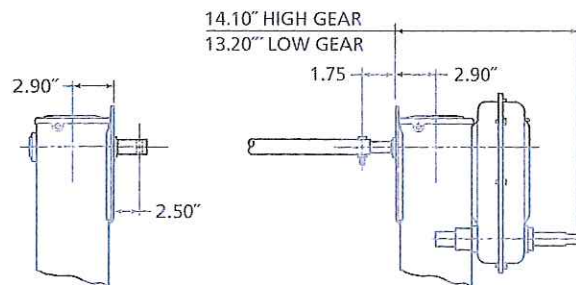
## 'A' UNIVERSAL MOUNTING



## 'B' INBOARD MOUNTING



## 'C' OUTBOARD MOUNTING



## MARK V™ LANDING GEAR DIMENSIONS

TRAVEL	"01" SELF LEVELING FOOT		"05" SAND SHOE <sup>1</sup>		"13" LOW PROFILE SAND SHOE <sup>1</sup>		"15" WT. SAVER SAND SHOE <sup>1</sup>		"24" REMOVABLE CUSHION FOOT <sup>2</sup>	
	A	B	A	B	A	B	A	B	A	B
12.5"	37.0"	24.5"	37.9"	28.0"	35.4"	25.5"	37.2"	27.3"	36.8"	26.5"
13.5"	41.3"	27.8"	42.2"	28.7"	39.7"	26.2"	41.5"	28.0"	41.1"	27.6"
15.0"	44.3"	29.3"	45.2"	30.2"	42.8"	27.7"	44.5"	29.5"	44.1"	29.1"
16.5"	47.3"	30.8"	48.2"	31.7"	45.7"	29.2"	47.5"	31.0"	47.1"	30.6"
17.6"	49.5"	31.9"	50.5"	32.9"	48.0"	30.4"	49.7"	32.1"	49.3"	31.7"
18.7"	51.8"	33.1"	52.7"	34.0"	50.2"	31.5"	52.0"	33.3"	51.5"	32.8"

<sup>1</sup> Travel code "0" is 9.9"

<sup>2</sup> Travel code "0" is 10.3"

NOTE: I-Beam 'D' and extended I-Beam 'F' mounting options also available.

# ORDERING INFORMATION

STEP 1 MODEL NUMBER		STEP 2 SELECT TRAVEL AND MOUNTING				STEP 3 SELECT AXLE AND FOOTWARE				
DESCRIPTION	MODEL	TRAVEL	CODE	MOUNTING	CODE	AXLE TYPE	CODE	FOOTWARE	CODE	DIMENSIONS
* LG. SET	LG5	12.5"	0	Universal	A	No axle	0	Self-Leveling	01	10.6" Diameter
1 Speed Side	XA-S9	13.5"	1	Inboard	B	Standard Pipe	1	Removable Cushion Foot	24	2.9"x10"x10"
2 Speed Side	XA-S8	15.0"	2	Outboard	C	Solid Axle	3	Wheeled	03	9" Diameter
H.D. SET	LGH	16.5"	3	**I-Beam	D			Sand Shoe	05	4.5"x10"x12"
1 Speed Side	XA-H9	17.6"	4	***Ext. I-Beam	F			Large Sand Shoe	08	5.0"x16.5"x14"
2 Speed Side	XA-H8	18.7"	6					Wheel & Sand Shoe	09	3.8"x10"x16"
								No Footware	13	2.0"x10"x12"
								Low Profile Sand Shoe	13	2.0"x10"x12"
								Weight Saver Sand Shoe	15	3.8"x10"x10"

**ORDER EXAMPLE:**    **STEP 1**    **STEP 2**    **STEP 3**  
**LGS**                      **3A**                      **115**  
 Model Number            Travel Code + Mounting Code            Axle Type + Footware Code

NOTE: Travel dimensions shown are not applicable for the Heavy-Duty Mark V models. Contact Landing Gear Application Engineering for heavy-duty travel dimensions.

- \* Landing gear set includes: cross shaft LG0094, crank XA-V-90-0, crank hanger XB-LG0085, brace ears (2 req.) XA-V-1938, cross shaft and crank hardware.
- \*\* With extra long drive shafts, 4.5" on both single and 2-speed legs compared to standard 1.75" on 2-speed and 2.5" on single speed.
- \*\*\* With extra long drive shafts, 7.75" on the 2-speed legs and 8.50" on the single speed legs.

<sup>3</sup> RCF not available with Heavy-Duty Mark V  
 NOTE: Footware dimensions are for ground contact area

## HEAVY-DUTY MARK V™ LANDING GEAR DIMENSIONS

### 10" x 12" SAND SHOE

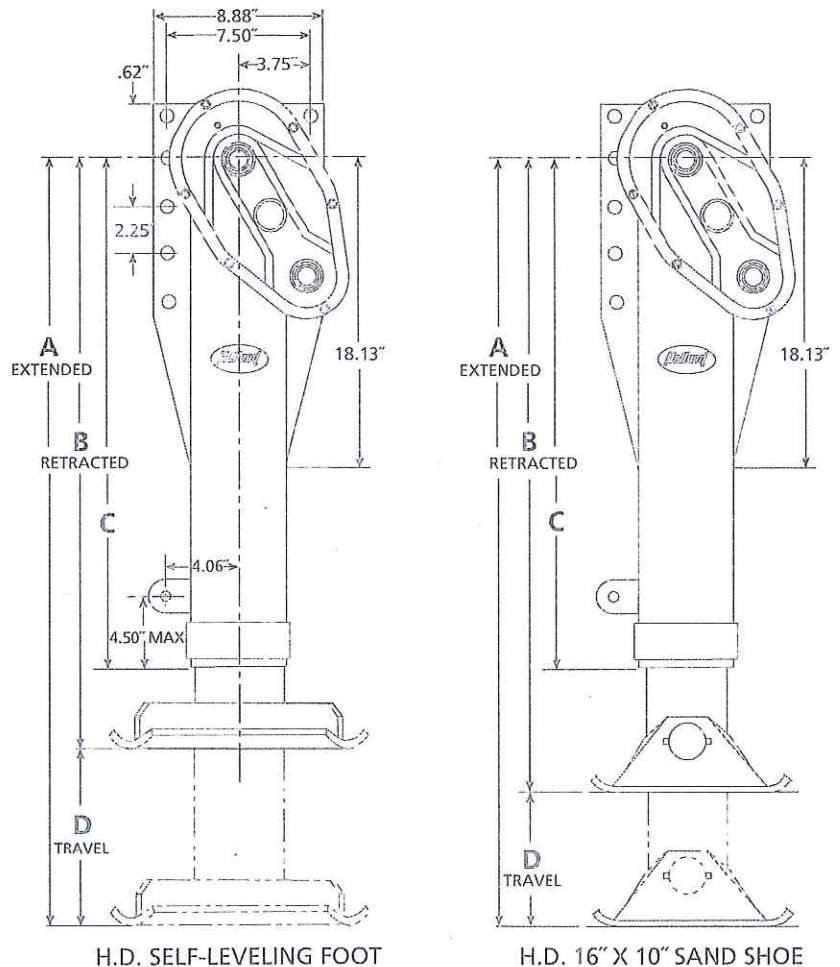
MODEL	A	B	C	D
LGH-1A305	42.2"	30.2"	24.5"	12.0"
LGH-2A305	45.2"	31.7"	26.0"	13.5"
LGH-3A305	48.3"	32.9"	27.1"	15.4"
LGH-4A305	50.6"	34.0"	28.2"	16.6"
LGH-5A305	52.7"	35.37"	29.6"	17.4"

### H.D. SELF-LEVELING FOOT

MODEL	A	B	C	D
LGH-1A012	41.4"	27.9"	24.5"	13.5"
LGH-2A012	44.4"	29.4"	26.0"	15.0"
LGH-3A012	47.4"	30.9"	27.1"	16.5"
LGH-4A012	49.6"	32.0"	28.2"	17.6"
LGH-5A012	51.9"	33.2"	29.6"	18.7"

### 16" X 10" SAND SHOE

MODEL	A	B	C	D
LGH-1A312	41.7"	29.7"	24.5"	12.0"
LGH-2A312	44.7"	31.2"	26.0"	13.5"
LGH-3A312	47.7"	32.3"	27.1"	15.4"
LGH-4A312	50.0"	33.4"	28.2"	16.6"
LGH-5A312	52.2"	34.8"	29.6"	17.4"



H.D. SELF-LEVELING FOOT

H.D. 16" X 10" SAND SHOE



From fifth wheel rebuild kits to suspension bushing repair kits, SAF-HOLLAND Original Parts are the same quality components used in the original component assembly. SAF-HOLLAND Original Parts are tested and designed to provide maximum performance and durability. Will-fits, look-alikes or, worse yet, counterfeit parts will only limit the performance potential and could possibly void SAF-HOLLAND's warranty.

Always be sure to spec SAF-HOLLAND Original Parts when servicing your SAF-HOLLAND product.

XL-LG11409SL-en-US Rev A · 2012-03-15 · Amendments and Errors Reserved © SAF-HOLLAND, Inc.

## HIGH QUALITY COMPONENTS FOR THE COMMERCIAL VEHICLE INDUSTRY



EUROPE · NORTH AMERICA · SOUTH AMERICA · AFRICA · ASIA · AUSTRALIA

SAF-HOLLAND USA, Inc.  
888.396.6501 Fax 800.356.3929

SAF-HOLLAND Canada Limited  
519.537.3494 Fax 800.565.7753  
Western Canada 604.574.7491 Fax 604.574.0244

[www.safholland.com](http://www.safholland.com)

