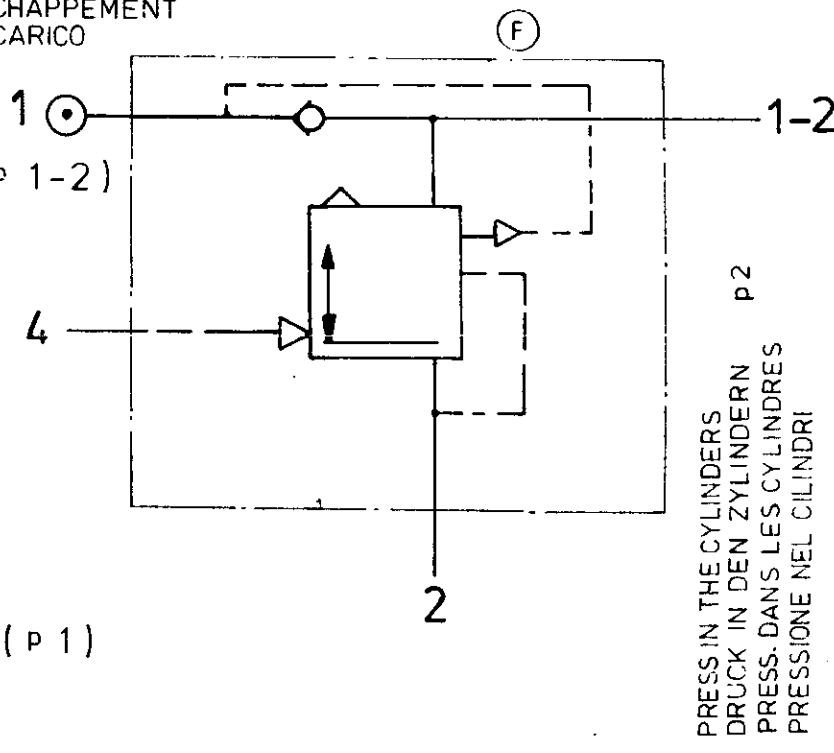


- 1-2: RESERVOIR SUPPLY PORT
ANSCHLUSS FUER LUFTBEHAELTER (P 1-2)
ORIFICE AU RESERVOIR
ORIFIZIO AL SERBATOIO
- 2: BRAKE CYLINDER PORT
ANSCHLUSS FUER ZYLINDER (P 2)
ORIFICE AUX CYLINDRES
ORIFIZIO AI CILINDRI
- 1: PORT FOR EMERGENCY LINE
ANSCHLUSS FUER VORRATSLEITUNG (P 1)
ORIFICE POUR CONDUITE AUTOMATIQUE
ORIFIZIO PER LA CONDOTTA AUTOMATICA
- 4: PORT FOR SERVICE LINE
ANSCHLUSS FUER BREMSLEITUNG (P 4)
ORIFICE POUR CONDUITE DIRECTE
ORIFIZIO PER LA CONDOTTA MODERABILE

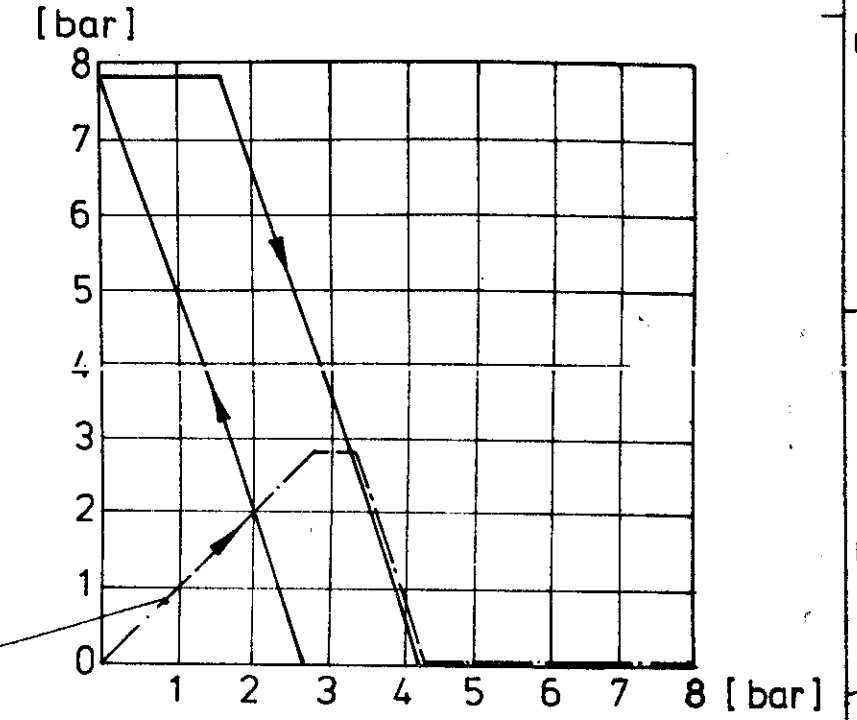
THERMAL RANGE OF APPLICATION
THERMISCHER ANWENDUNGSBEREICH -40°...+80° C
GAMME D'APPLICATION THERMIQUE
CAMPO DI APPLICAZIONE TERMICA

MEDIUM: AIR
MEDIUM: LUFT
FLUIDE: AIR
FLUIDO: ARIA

EXHAUST
ENTLUEFTUNG
ECHAPPEMENT
SCARICO



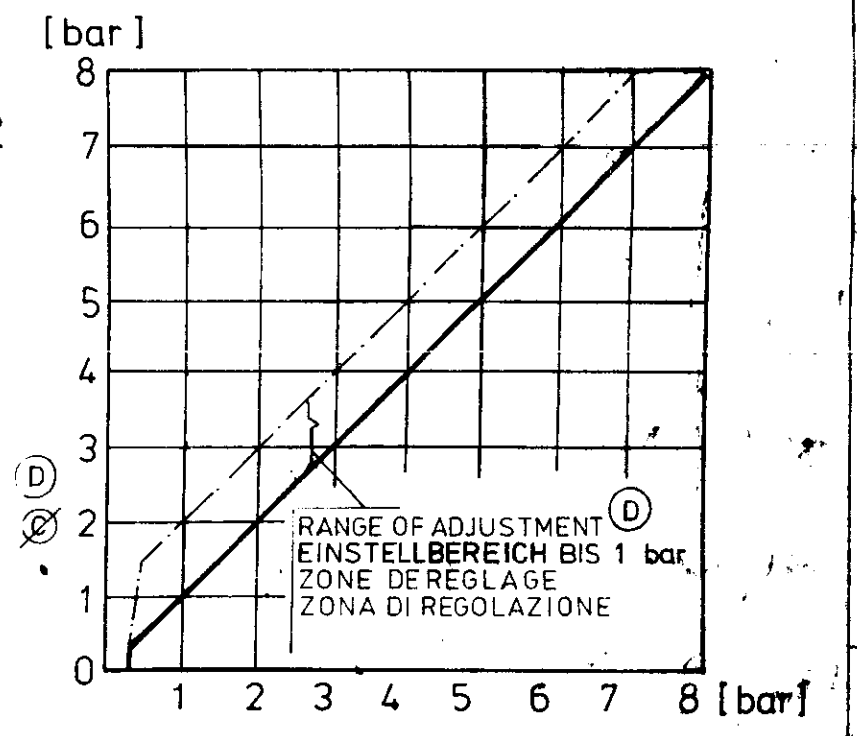
EMERGENCY BRAKING
AUTOM. BREMSUNG
FREINAGE AUTOMATIQUE
FRENATURA AUTOMATICA



PRESS IN THE EMERGENCY BRAKE LINE
DRUCK IN DER VORRATSLEITUNG p1
PRESS. DANS LA CONDUITE AUTOMATIQUE
PRESSIONE NELLA CONDOTTA AUTOMATICA

PRIMARY FILLING
ERSTES AUFFUELLEN
PREMIER REMPLISSAGE
PRIMO RIEMPIIMENTO

SERVICE BRAKING
BETRIEBSBREMSUNG
FREINAGE DIRECTE
FRENATURA MODERABILE



PRESS IN THE SERVICE BRAKE LINE
DRUCK IN DER BETRIEBSBREMSLEITUNG p4
PRESS. DANS LE CONDUIT DE FREIN DE SERVICE
PRESS. NELLA CONDOTTA DEL FRENO DI SERVIZIO

WORKING PRESSURE
BETRIEBSDRUCK MAX 10 bar
PRESSION D'UTILISATION
PRESSIONE DI ESERCIZIO

93 005 2x (A) 93.01.18		DATE	76-05-17	DRAWN	WABCO
16 890 1x (F) 82-03-22		CHECKED	78-10-25	WABCO	RELAY EMERGENCY VALVE
16 854 1x (E) 78-06-25		CHECKED	76-05-20	WABCO	VALVE RELAIS D'URGENCE
15 818 2x (D) 77-10-19		CHECKED	77-10-19	WABCO	SERVODISTRIBUTORE
1x (C) 77-09-15		CHECKED	77-09-15	WABCO	ANHAENGER BREMSVENTIL
1x (B) 77-05-23		MASS	SCALE	IDENTIFICATION CODE	
2x (A) 7705-08		13	1:1	791 002 150 0 (A)	721 123 00
CHANGE NO.	LETT.	DATE	SIZE	T.R.1	CODE FOR DOCUMENT
			A 2	210	60 5
REPLACEMENT FOR	DATE	SIZE	T.R.1	CODE FOR FUNCTION	CODE FOR SHAPE
				525	