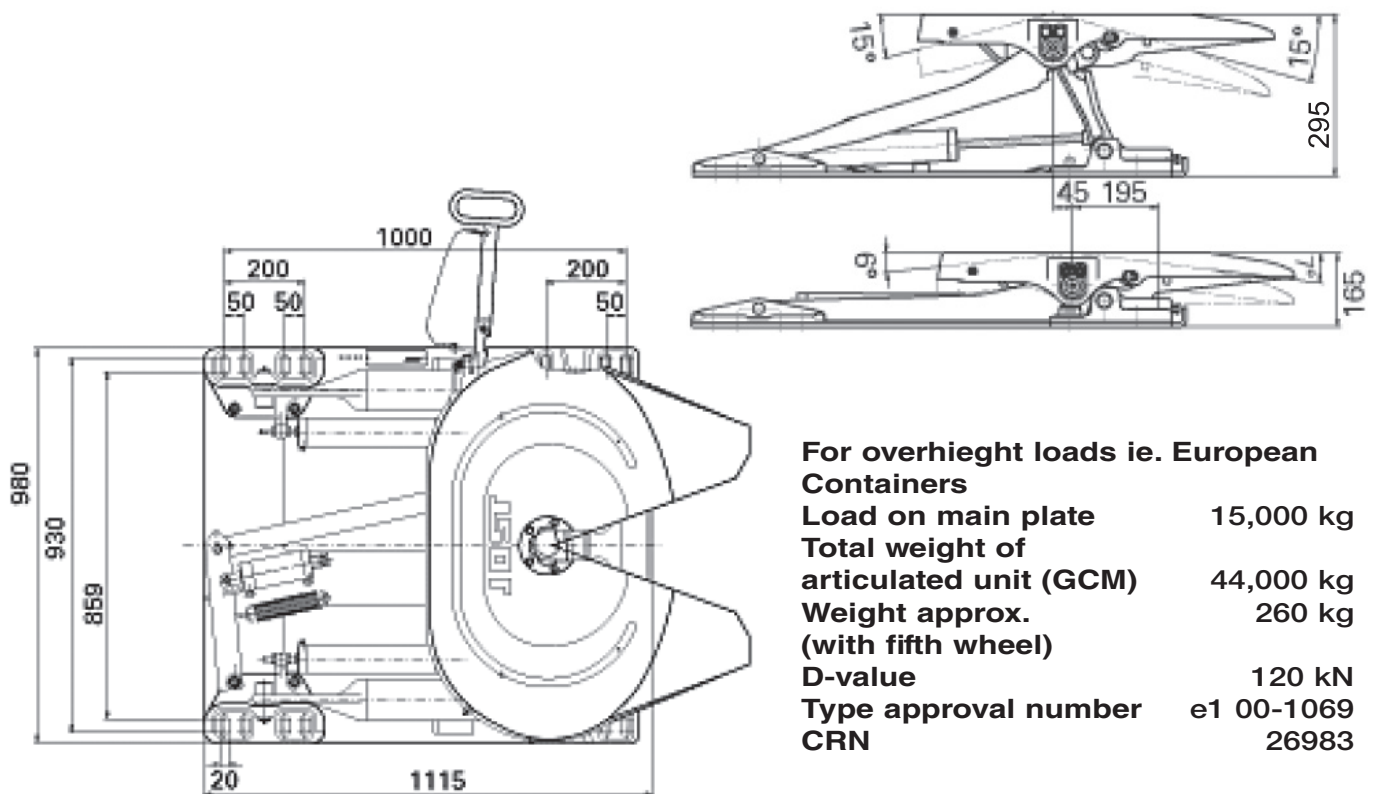
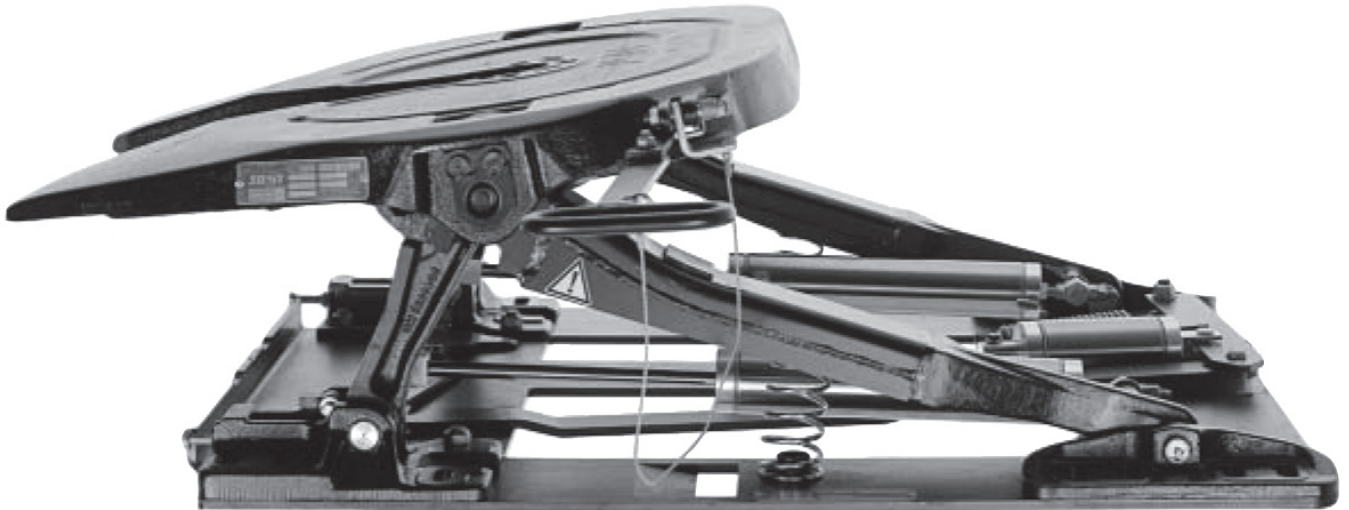


Type DH 200



The above loads apply to operation on ordinary roads and ordinary operating conditions as they are to be found in Europe. If the fifth wheels are being operated in other territories or under other conditions we would ask you to contact us regarding the type of fifth wheel to be used.

The right to alter specifications is reserved.

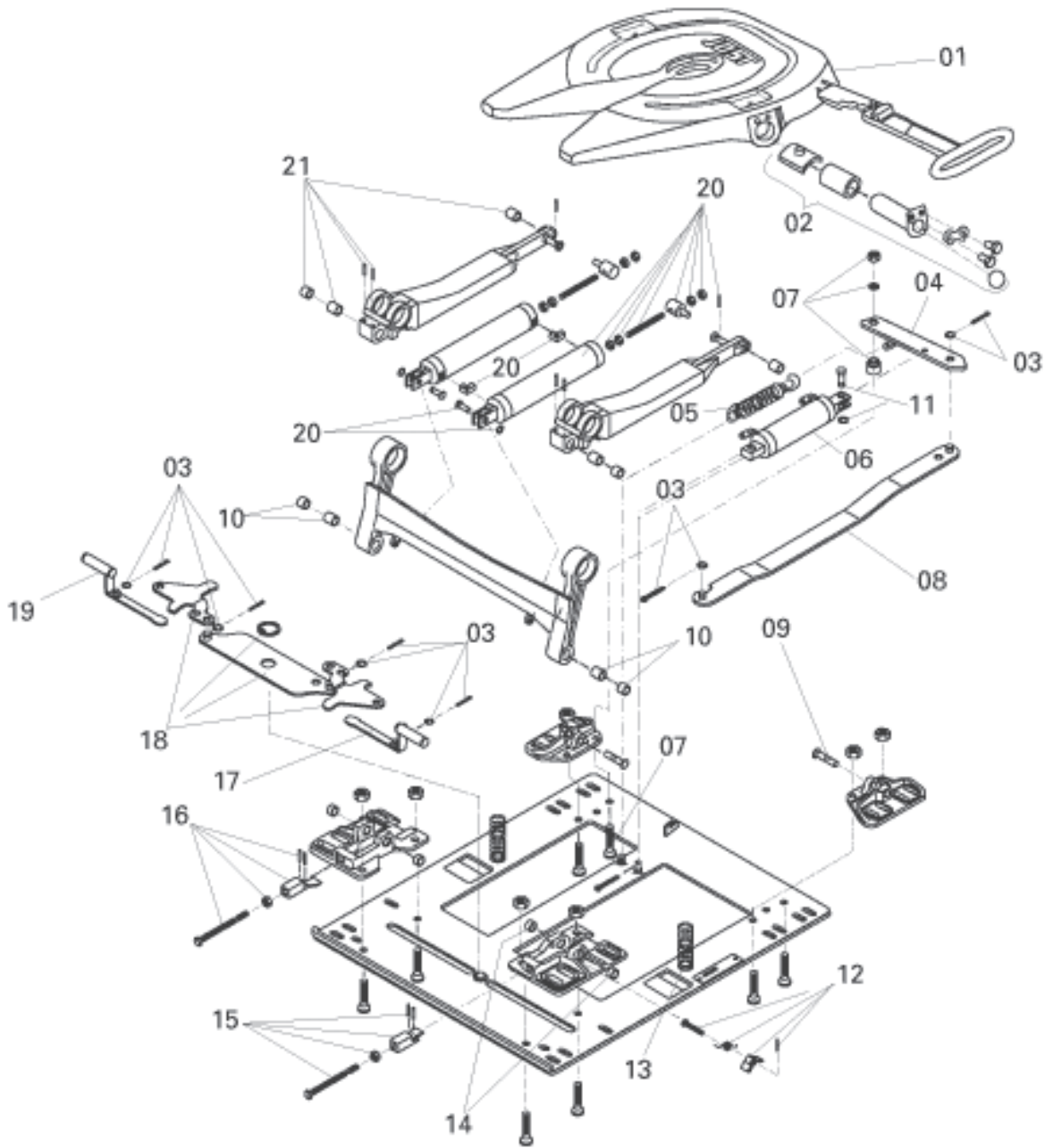


Fig.	Description	Part No
1	Fifth wheel coupling	JSK 37 E/00128cm
2	Fifth wheel coupling bearing, compl.	DH 1019902
3	Split pin, complete	DH 1019903
4	Lever	DHE 1011600
5	Double tension spring	SK 2405-23
6	Closing cylinder	DHE 1011100
7	Spacer bushing, complete	DH 1019907
8	Lever	DH 1019908
9	Pivot pin	DH 1019909
10	Bushing set 1	DH 1019910
11	Bolt complete	DHE 1003100

Fig.	Description	Part No
12	Latch, complete	DH 1019912
13	Spring	DH 1019913
14	Bushing set 2	DH 1019914
15	Wedge right, complete	DH 1019915
16	Wedge left, complete	DH 1019916
17	Locking pin, right	DH 1019917
18	Elbow lever	DH 1019918
19	Locking pin, left	DH 1019919
20	Cylinder, complete	DH 1019920
21	Bushing set 3	DH 1019921