

JSK SL Standard and XXL



Multi-purpose

- Fifth wheel coupling position freely adjustable in 50mm steps
 - optimum shaft load and load distribution
 - total traction length setting
- 4 construction heights: 173, 203, 220 or 263mm
- Can be attached to all standard vehicle types
- Equipped with the tried and tested fifth wheel couplings JSK 37 E, JSK 37 EW or JSK 36 D

Easy Mounting and operation

- All standard customer hole patterns available ex works
- Easy to mount with a hexagonal bolt
- Base plate to suit narrow or standards spec chassis

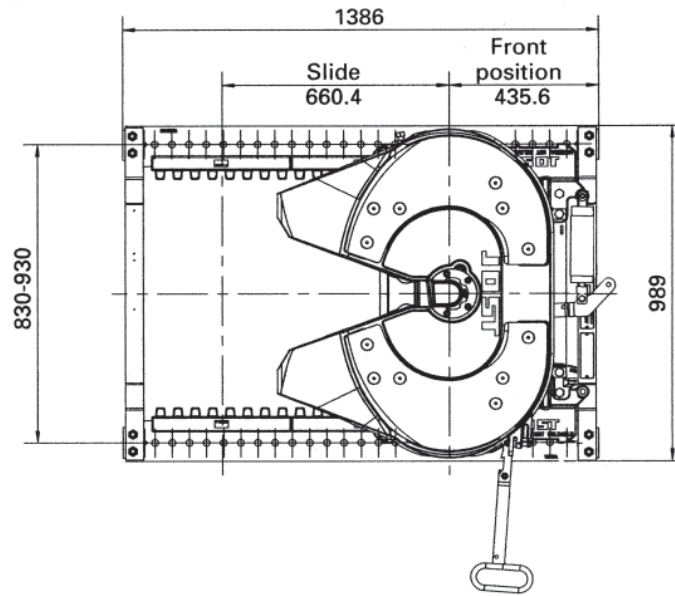
Lightweight, compact and robust

- 25% lighter than its predecessors
- Greater degree of travel with smaller external dimensions
- Cathodic electrophoretic painting for optimum anti corrosion

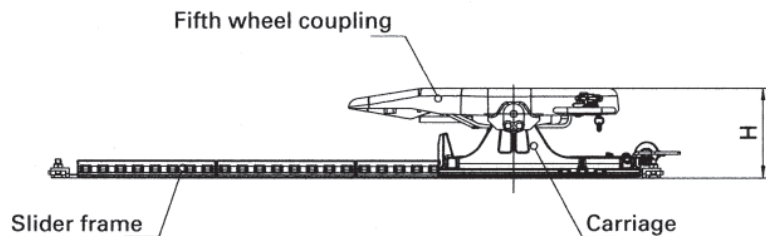
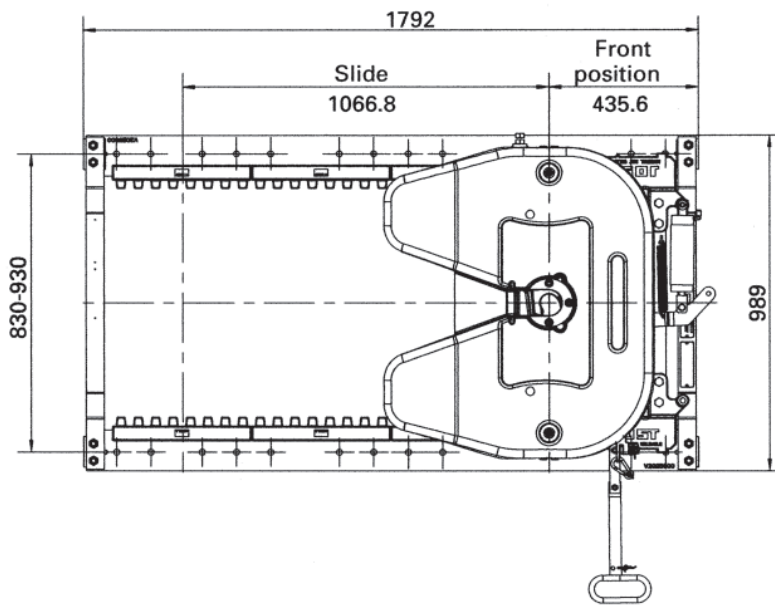
Top safety standards

- Self-locking mechanism, protected against accidental opening
- Elbow lever principle for greater locking force
- Fourfold, interlocking lock between the carriage and slider frame
- Forged gear tooth rows
- Cast pedestals

Standard



XXL



Technical specifications

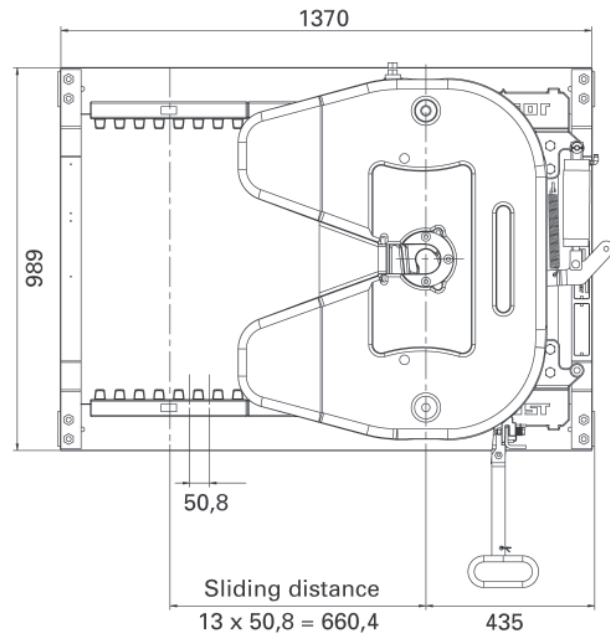
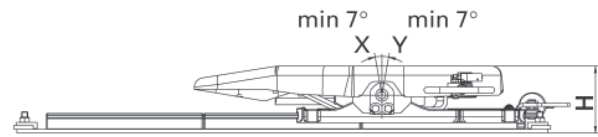
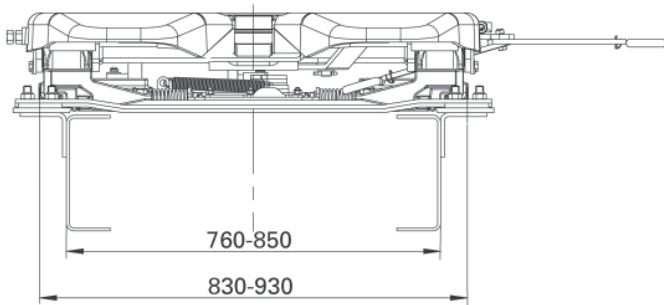
| Version | Mounting height (mm) | Permitted imposed load (t) | D value (kN) | Weight minus fifth wheel coupling (kg) | CRN |
|----------|----------------------|----------------------------|--------------|--|-------|
| Standard | 173/203/220/263 | 20t | 190kN | approx. 118kg | 36820 |
| XXL | 173/203/220/263 | 20t | 190kN | approx. 139kg | 36820 |

Components and variantes

| Part No. | Fifth Wheel | Height (mm) | Width (mm) |
|-----------------|-------------|-------------|------------|
| JSK SLE 04521AA | JSK 37EW | 203 | Undrilled |
| JSK SLE 03223AA | JSK 37E | 173 | Undrilled |
| JSK SLE 03224AA | JSK 3EW | 173 | Undrilled |
| JSK SLE 04520BC | JSK 37E | 203 | 880 |
| JSK SLE 04520BD | JSK 37E | 203 | 930 |
| JSK SLE 04521BC | JSK 37EW | 203 | 880 |
| JSK SLE 04523AA | JSK 37E | 203 | Undrilled |
| JSK SLE 032X8AA | JSK 37E | 173 (XXL) | Undrilled |
| JSK SLE 045X8AA | JSK 37E | 203 (XXL) | Undrilled |
| JSK SLE 07321AA | JSK 37EW | 263 | Undrilled |

Technical Specification

The slider with integral JOST series JSK 37 E or 36 D fifth wheel coupling is designed for 2" king pins (50) as per EG 94/20, DIN 74080, ISO 337.



Technical Data

| D value (kN) | Imposed load U (t) | CRN |
|--------------|--------------------|-------|
| 190 | 20 | 36820 |