



STEMCO HUB CAP PREFIXES

PreFix	Description
340-	Standard hub cap without oil port.
342-	Dirt exclusion grease hub cap.
343-	Standard hub cap with oil port.
347-	Hubodometer hub cap with oil port.
348-	Sentinel® oil hub cap.
349-	Sentinel® grease hub cap.
352-	Solid grease hub cap.



STEMCO POPULAR HUB CAPS LISTING

Part No. Description

- 340-4009** Standard 6 hole hub cap without oil port.
340-4013 Standard 5 hole hub cap without oil port.
340-4019 Standard 3 hole hub cap without oil port.
340-4024 6 hole hub cap w/o oil port, 3.5id, 5.25od
340-4075 Screw on hub cap.
340-4095 6 hole hub cap w/o oil port, 4.56id, 6.19od
340-4195 6 hole hub cap w/o oil port, 5.44id, 7.5od
340-4370 6 hole PSI for grease. 5.5" bolt centers
340-4372 6 hole PSI for grease. 6.5" bolt centers
340-4975 6 hole TRAILER HUBCAP
340-5096 6 hole for grease, steel, vented.

- 342-4009** 6 hole, dirt exclusion, with gasket.
342-4195 6 hole, dirt exclusion, for grease.



340-4009
6 hole cap
w/o oil port



340-4075
Screw on
cap



340-5096
Stemco Vented
Steel Cap

Part No. Description

- 343-4009** Standard 6 hole hub cap *with* oil port.
343-4013 Standard 5 hole hub cap with oil port.
343-4019 Standard 3 hole hub cap with oil port.
343-4024 6 hole hub cap with oil port, 3.5id, 5.25od
343-4195 6 hole hub cap with oil port, 5.44id, 7.5od
343-4249 6 hole hub cap with oil port, 4.44id, 5.19od
343-4370 6 hole PSI for oil. 5.5" bolt centers
343-4372 6 hole PSI for oil. 6.5" bolt centers

- 348-4009** Sentinel® 6 hole for oil, 5.5" bolt circle.
349-4009 Sentinel® 6 hole for grease, 5.5" bolt circle.

- 352-4009** Grease 6 hole hub cap, 5.5 b.c., vented.
352-4195 Grease 6 hole hub cap, 6.75 b.c vented.



342-4009
6 hole dirt
exclusion



348-4009
Sentinel®
6 hole for oil



352-4195
6 hole grease
alum cap

STEMCO SENTINEL® HUBCAPS

Sentinel ESP with its patented Sentinel Technology extends seal and bearing life. It reduces contaminant build-up on windows. Clean and dry hub caps make it easier to view oil levels - no more sticking your finger into the cap to determine the lube levels. Plus, cleaner looking wheel ends look well maintained. Sentinel Technology also means longer life from your wheel end oil. No more breakdown of the oil from power washers or submerged wheels.



348-4009
Sentinel®
6 hole for oil

Stemco Sentinel ESP™ Extended Service Hubcap Plug
 Fits all other Stemco caps using 359-5990 plug.
Part No. 359-6125

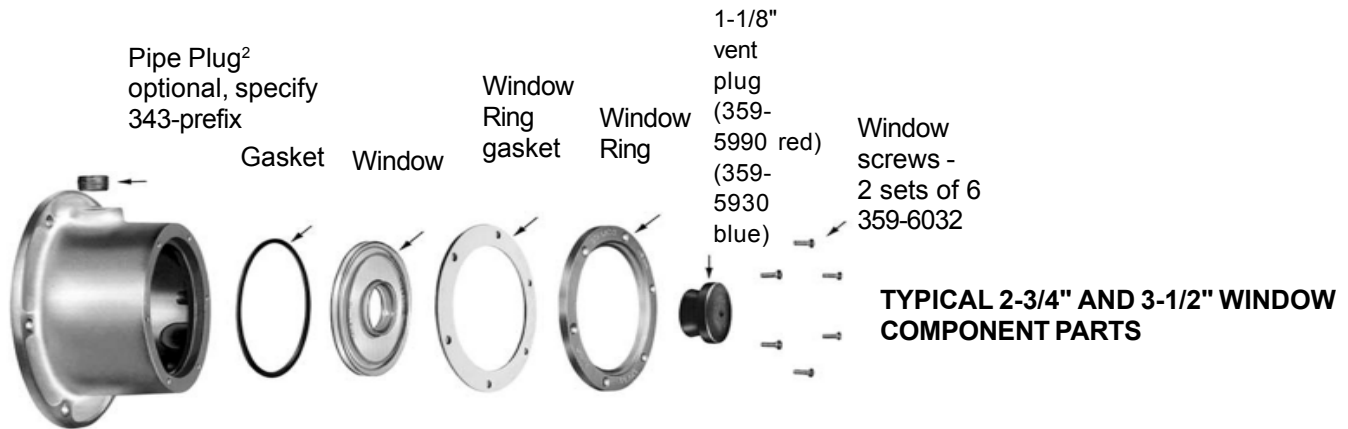


Stemco Sentinel Drive Axle Plug
Part No. 359-6137

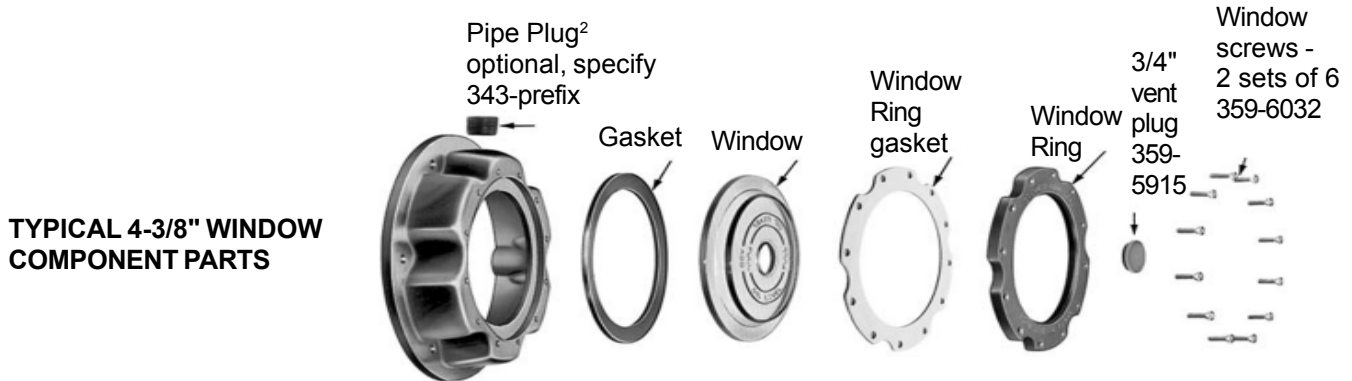
SENTINEL™



STEMCO HUBCAP COMPONENT PARTS



TYPICAL 2-3/4" AND 3-1/2" WINDOW COMPONENT PARTS



TYPICAL 4-3/8" WINDOW COMPONENT PARTS

Contact us: info@wabco.cn

Window Diameter	Window	Gasket	Window Ring	Window Ring Gasket	Vent Plug	Screw Set Set of 6	Window Kit ¹
2-3/4	359-5983	359-5996	359-5997 ³	359-3136	359-5990 ⁴	359-6032	359-5999
3-1/2	359-5994	359-5991	359-5992	359-3127	359-5990 ⁴	359-6032	359-5995
3-1/2	359-5981 ⁵	359-5991	359-5992	359-3127	None	359-6032	359-6117
4-3/8	359-5918	359-5968	359-5970	359-3137	359-5915	359-6032 ⁷	359-5912
3-1/2	359-6049 ⁶	359-5991	359-5992	359-3137	359-5915	359-6032	359-6100 ⁶

¹Window kit consists of window, gasket, window ring, gasket and vent plug.

²Magnetic pipe plug part number 359-5984

³5 hole window ring.

⁴Blue vent plug part number 359-5930

⁵Window for mounting Argo, Stemco and Veeder-Root hub-odometers. Be sure hub cap has pipe plug filler before mounting.

⁶Window with recessed vent plug.

⁷Two sets required.

Gasket for 34x-4195 is 330-3118.

Contact us: info@wabco.cn



C/R HUBCAPS



In addition to Scotseal TF Hubcaps for oil bath applications, the Scotseal TF line includes the Tamper-Proof Scotseal TF Hubcap, specifically designed for use with today's grease packed systems. Its patented "umbrella" style valve seals out contamination yet vents internal pressure as low as 2 PSI—even when covered with 1/4" of grease.



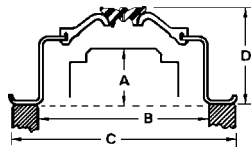
Approved by all major OE truck and trailer builders, Scotseal® TF Hubcaps are compatible with all popular oils and greases

This unique design forms a full 360° seal against the hubcap surface to protect wheel ends from damaging road spray, power washers and flooded docks.

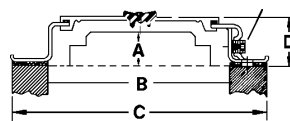
SKF HUBCAP SPECIFICATIONS

To determine the correct hubcap for mounting, count the number of mounting holes, measure diameter of bolts, measure bolt circle (select 2 holes opposite each other and measure from the center of one bolt hole to the center of the one opposite).

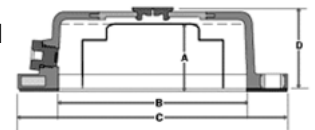
Type H3



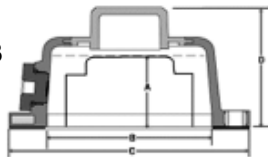
Type H6



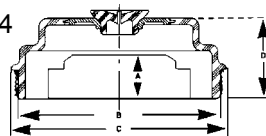
Type TF1



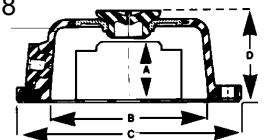
Type TF3



Type TF4



Type TF8



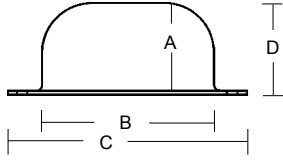
Bolt Circle	Bolt Holes	Hole Size	Max Axle Ext (A)	I.D. (B)	O.D. (C)	Height (D)	Type	Hubcap Gasket no.	Hubcap Plug no.	Hubcap Kit no.
5.500	6	.349	1.990	4.432	6.250	3.082	TF3	CR453795	-	CR1600
4.500	6	.349	1.586	3.500	6.250	2.609	TF8	CR453869	CR453807	CR1612
5.500	6	.349	5.500	1.586	6.250	1.643	TF1	CR453795	CR453979	CR1613
5.500	6	.349	1.730	4.440	6.250	2.469	TF8	CR453795	CR450434	CR1643
5.500	6	.349	1.730	4.440	6.250	2.469	TF8	CR453795	CR453807	CR1644

Bolt Circle	Bolt Holes	Bolt Size	Max Axle Ext (A)	I.D. (B)	O.D. (C)	Height (D)	Type	Hubcap Gasket no.	Hubcap Plug no.	Hubcap Kit no.
5.500	5	.313	1.742	4.525	6.313	2.683	H3	CR450775	CR450434	CR1742
5.500	6	.313	1.485	4.540	6.625	1.702	H6	CR450788	CR453813	CR1788
5.500	6	.313	1.742	4.525	6.313	2.683	H3	CR453795	CR450434	CR1743
5.562	6	.313	1.625	4.540	6.625	1.837	H6	CR450781	CR453813	CR1703
5.500	6	.349	1.120	4.257	6.250	1.397	TF1	CR453795	CR453879	CR1790
6.750	6	.349	2.887	5.645	7.500	3.688	TF8	CR453799	CR450434	CR1796



HUBCAPS & ACCESSORIES

NL1013
Steel Cap
(Unvented)



Grease Steel Hub Cap
for standard trailer applications where grease is needed. Specs Below.

64009S



TRISEAL

Stamped Steel Hub Cap
High-tech plastic window remains clear and is shatter resistant. They pass the 200 hour CASS (salt spray) test.

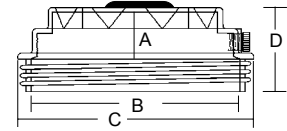
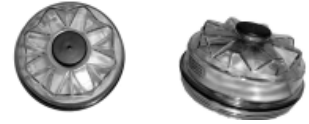
HU009A



National®

Each hub cap is packed with a premium Fel-Pro flange gasket that's engineered to prevent contamination of hub lubricants and provide protection for bearings and seals. These Fel-Pro gaskets feature a nonstick coating, which makes installation hassle-free and ensures superior sealing.

NL1568



Screw-on Lexan Hub Cap
Comes with plug and ring. Similar to Propar hubcap. Interchanges to E-4075.

Hubcap Part No.	Bolt Circle	Bolt Holes	Bolt Size	I.D. (A)	O.D. (B)	Height (D)	Gasket	Oil Port Plug	Vent Plug	
HU009A	5.500	6	.313	2.531	4.375	6.250	2.531	1011028	No	B-300
NL1568	Threaded	6.25"X8	OD Threads	2.156	5.813	6.500	3.125	401265	401471	401237V
64009S	5.500	6	.312	2.50	4.54	2.99	2.50	1011028	No	YES
NL1013	5.500	6	.313	2.25	4.563	6.18	2.313	1011028	No	No



6 hole hub cap
Aluminum, for oil. Has side oil port. Comes with gasket
Part No. 1011029



6 hole hub cap
Aluminum, for oil. Has side oil port. Comes with gasket
Part No. 1011029



HUB CAP ACCESSORIES

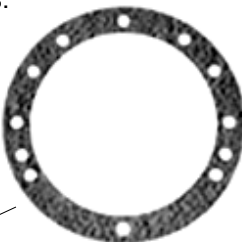
Vent Plug
For NL1568 and other plastic caps. Black.
Part No. 401237V



Vent Plug
Standard Size (.030/.040) Red.
Part No. 401199



O Ring
For NL1568 and other screw-on caps. 6" ID x 6-3/8" OD
Part No. 401265



Hub Cap Bolt
5/16-18x3/4 Trim Hex.
Part No. 1010125

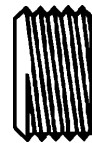


Universal Gasket
Multi-hole pattern makes this gasket very versatile!
Part No. 401526

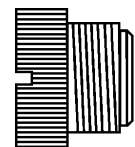
National hubcap plug
Part No. B300



Oil Port Plug, Steel
For Aluminum Hubcaps
Part No. 401273

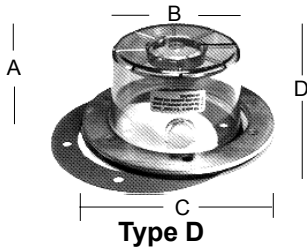


Oil Port Plug, Plastic
For Lexan Hubcaps NL1554, NL1555 NL1568, 347-4075
Part No. 401471
Includes O-ring

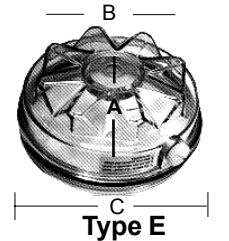




HUBCAPS FOR HUBODOMETERS



Type D
Clear Lexan, with gasket. Includes steel reinforcing ring. Pipe plug included.



Type E
Screw-on cap. 6^{1/4}" X 8 external thread, with oil port plug. Complete with O-ring.

Hubcap Part No.	Bolt Circle	Bolt Holes	Bolt Size	(A)	I.D. (B)	O.D. (C)	Height (D)	Type	Gasket	Oil Port Plug
NL1555	5.50	6	.313	2.438	4.313	6.719	3.000	D	1011028	401471
NL1554	Threaded	6.25"X8	OD Threads	2.156	5.813	6.500	3.125	E	401265	401471

Hubcap Part No.	Bolt Circle	Bolt Holes	Bolt Size	(A)	I.D. (B)	O.D. (C)	Height (D)	Gasket (Furnished)	Oil Port Plug
347-4009	5 ^{1/2}	6	5/16	2 ^{11/16}	1 ^{15/16}	4 ^{3/8}	6 ^{1/4}	1011028 ¹	401273
347-4013	5 ^{1/2}	5	5/16	2 ^{11/16}	1 ^{15/16}	4 ^{3/8}	6 ^{1/4}	5Hole ¹	401273
347-4075	Pro-Par screw-on cap							330-3077 ²	

¹Universal gasket part no. 401526 can be substituted.

²Gasket no. 401265 can be substituted.



STEMCO HUBODOMETERS

**Guaranteed Over-Life-of-Tire Accuracy
Backed by 500,000-Mile Warranty**



Part Number	RPM	Typical Tire Size
650-0587	480	10.00-22 / 11-24.5
650-0598	500	10.00-20 / 11-22.5
650-0601	504	10.00R20 / 11R22.5
650-0608	520	295 / 75R22.5
650-0610	522	10-22.5 / 10R22.5
650-0626	570	255/70R22.5 std.



- Main shaft is independent of front cover, greatly reducing failure caused by frontal impact.
 - Unit is sealed for added durability in a moisture-controlled environment of polycarbonate and steel.
 - Externally pinioned odometer mechanism utilizes low-friction molded components.
- These features, plus nine permanently lubricated bronze bearings, eliminate wear and ensure long life. Worm drive rotates parts less frequently, reducing wear. Naval brass on steel. No plastic drive components.*



Mounted with 347-series Hubo Hubcap



Mounted with 640-series Hubo Hubcap



Mounted with 610-series Hubo Bracket

Popular Hubodometer Brackets

Part Number	Bolt Circle Diameter	Stud Size	Height
610-0065	5 ^{1/2}	5/16	3 ^{1/2}
610-0006	7	5/8	1 ^{11/16}
610-0007	7	3/4	1 ^{11/16}
610-0011	5 ^{1/4} -7 ^{3/4}	1/2	1 ^{3/4}
610-0024	5 ^{1/2}	5/19-18 Thrd	4 ^{1/2}



HUBODOMETERS



STEMCO™

A Higher Standard of Performance.™

DataTrac®



POPULAR DATATRAC™ APPLICATIONS The Part No. we stock/use is MILE

TIRE MAKE	TIRE MODEL	TIRE SIZE	MILE	KILOMETER
BRIDGESTONE	M726	11R22.5	600-5499	600-4310
	M726	11R24.5	600-5476	600-4296
	M726	255/70R22.5	600-5564	600-4351
	M726	285/75R24.5	600-5499	600-4310
	M726	295/75R22.5	600-5514	600-4320
	R194	11R22.5	600-5513	600-4319
	R194	11R24.5	600-5489	600-4304
	R194	255/70R22.5	600-5580	600-4361
	R194	285/75R24.5	600-5513	600-4319
	R194	295/75R22.5	600-5529	600-4328
GOODYEAR	G104	255/70R22.5	600-5579	600-4360
	G124	11R22.5	600-5505	600-4314
	G124	255/70R22.5	600-5572	600-4356
	G167	11R22.5	600-5501	600-4311
	G167	295/75R22.5	600-5515	600-4320
	G314	11R22.5	600-5512	600-4318
	G314	11R24.5	600-5488	600-4303
	G314	285/75R24.5	600-5514	600-4320
	G314	295/75R22.5	600-5529	600-4328
	G362	11R24.5	600-5478	600-4297
	G362	285/75R24.5	600-5501	600-4311
	G362	295/75R22.5	600-5515	600-4320
	G372	11R24.5	600-5476	600-4296
G372	285/75R24.5	600-5497	600-4309	
G372	295/75R22.5	600-5512	600-4318	
MICHELIN	XDA2	11R22.5	600-5502	600-4312
	XDA2	11R24.5	600-5480	600-4298
	XDA2	255/70R22.5	600-5566	600-4352
	XDA2	275/80R22.5	600-5519	600-4323
	XDA2	275/80R24.5	600-5502	600-4312
	XZA2	11R22.5	600-5510	600-4317
	XZA2	11R24.5	600-5485	600-4302
	XZA2	275/80R22.5	600-5526	600-4327
	XZA2	275/80R24.5	600-5509	600-4316
	XZE	255/70R22.5	600-5574	600-4357



HUBODOMETERS

VEEDER-ROOT

Vehicle Products

DIVISION OF DANAHER CONTROLS



Don't know what kind of tire, or can't find a listing?

Follow these simple steps for determining the hub-odometer you need:

1. Measure from ground to center of hub.
Try to be as accurate as possible.
 2. Double this measurement (to get diameter).
 3. Multiply by 3.1428. (Pi.) This will give you the circumference of the tire in inches.
 4. Divide by 12. (to get feet)
 5. Divide result into 5,280.
- This will give you the number of Revolutions Per Mile!!

Ratio (Face Plate Markings)	Miles Part Number	Kilometers Part Number
465 $\frac{1}{2}$:1	777717-465	777727-465
475:1	777717-475	777727-475
494:1	777717-494	
500:1	777717-500	777727-500
510:1	777717-510	
514 $\frac{1}{2}$:1	777717-514	777727-514
520:1	777717-520	
546:1	777717-546	
550:1	777717-550	777727-550
572:1	777717-572	
612:1	777717-612	
676:1	777717-676	

- 300,000 mile warranty
- American made since 1895

Performance when it counts!



Universal Bracket (multi-pc)
Part No. 325614-101

- Replace your inventory with just one number!
- Programmable with tool included. Simple!
- Zinc, diecast.
- Error Free Display.
- Separate Trip, and Lifetime totals.
- Miles or Kilometers
- 5 year warranty - no mileage limitation.
- Security features include serial # viewing
- Only one moving part for increased reliability!



Electronic Hubodometer

One Model for any tire ever made...Or ever will be made!

Part No.
RT1000-000

